



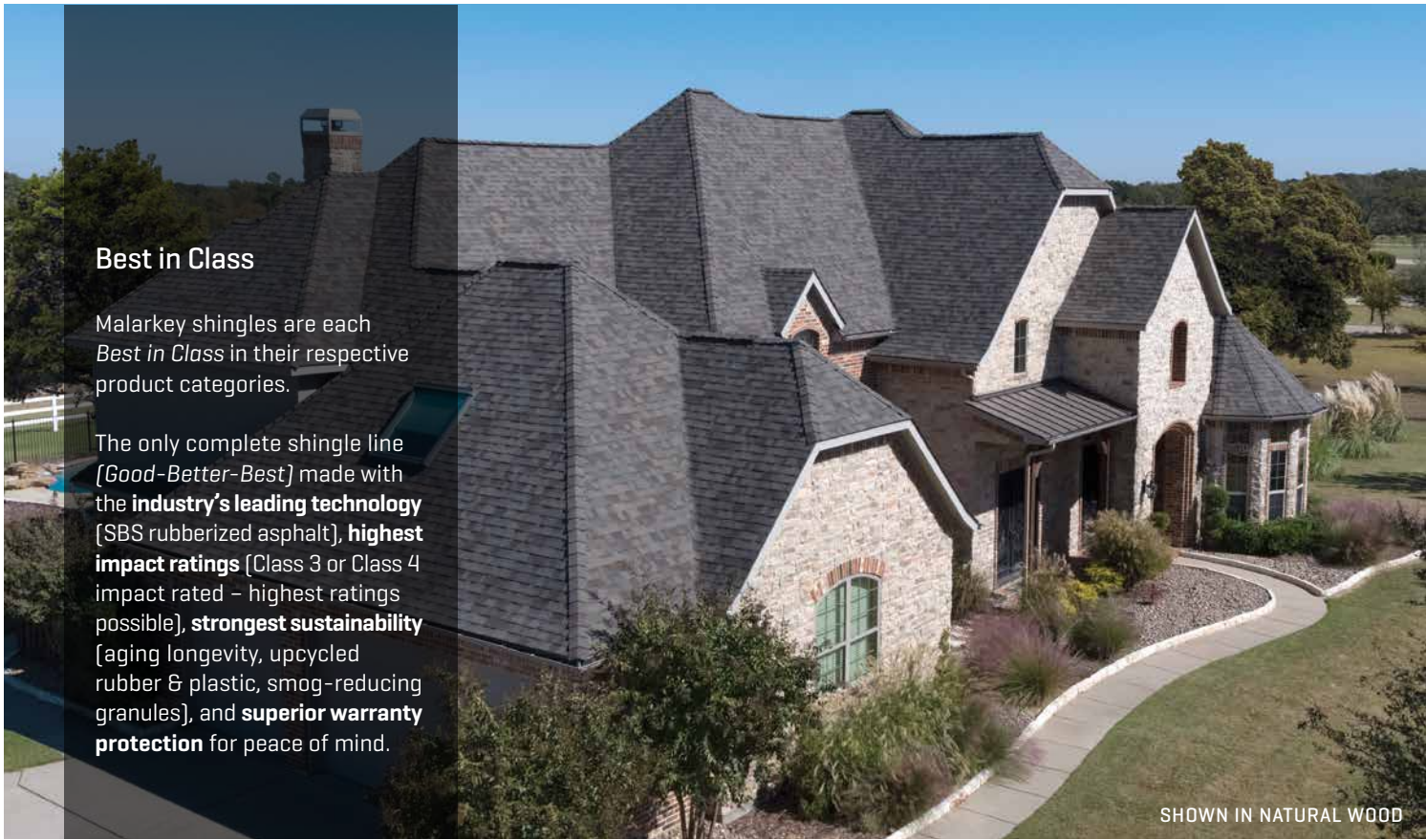
SHOWN IN NATURAL WOOD



Architectural Shingles

Performance Engineered, Sustainably Designed

Aging, Algae, & Impact Resistant



Best in Class

Malarkey shingles are each *Best in Class* in their respective product categories.

The only complete shingle line [Good-Better-Best] made with the **industry's leading technology** [SBS rubberized asphalt], **highest impact ratings** [Class 3 or Class 4 impact rated – highest ratings possible], **strongest sustainability** [aging longevity, upcycled rubber & plastic, smog-reducing granules], and **superior warranty protection** for peace of mind.

SHOWN IN NATURAL WOOD

Made with NEX® Polymer Modified [Rubberized] Asphalt Technology

Asphalt Weathering, Rubber Tough, Environmentally Conscious

Patented NEX® Polymer Modified [SBS Rubberized] Asphalt Technology enhances asphalt's suppleness and stickiness to resist thermal dry-out and aging, and better adhere granules, while adding **rubberlike durability and flex for superior impact resistance, granule adhesion, all-weather resilience, and aging longevity.**

[THE NEX® FORMULA]



High-Grade Asphalt
Waterproofing & Granule Adhesion



Synthetic Rubber Polymers (SBS)
Strength, Aging, Flexibility

+



Upcycled Rubber Polymers
Durability, Aging, Sustainability



Upcycled Plastic Polymers
Strength & Sustainability



Sustainable Performance™

Superior Performance & Better for the Environment

CRAFTSMANSHIP

Up to 2X Larger Nailing Area
Up to 50% More Adhesive Bonds
2X Rain Seals

PERFORMANCE

Up to 35% Greater Tear Strength
Up to 65% Greater Granule Adhesion
Up to Class 4 Impact Rating

SUSTAINABILITY

[PER ROOF]¹
Upcycles ~5 Rubber Tires
Upcycles ~3,200 Plastic Bags
Cleans Smog Pollution like ~2 Trees

Color Options

See shingle colors on a roof, or your roof, at www.malarkeyroofing.com/roof-designer.

Distributed from Oklahoma City, OK **(H)** Highlander® AR **(V)** Vista® AR **(L)** Legacy® Scotchgard™ Protector
Matching colors available in high-profile EZ-Ridge® XT as well as standard low-profile RidgeFlex® hip and ridge shingles.



STORM GREY [H, V, L]



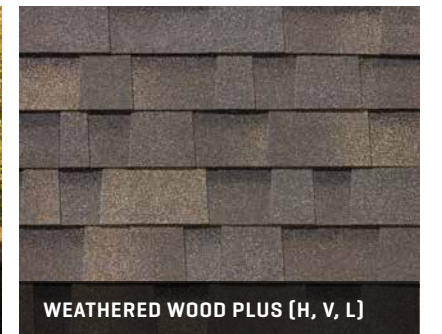
BLACK OAK [H, V, L]



BRILLIANT BLACK [H, V, L]



SHOWN IN SILVERWOOD



WEATHERED WOOD PLUS [H, V, L]



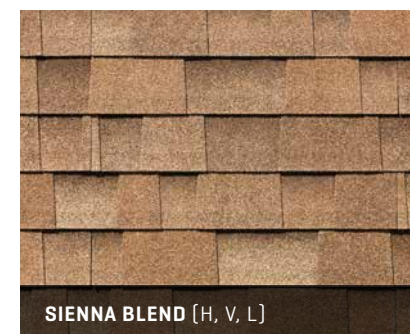
ANTIQUE BROWN [H, V, L]



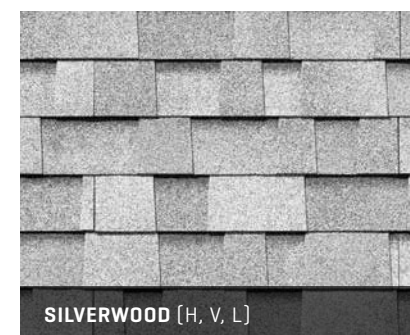
HEATHER [H, V, L]



NATURAL WOOD [H, V, L]



SIENNA BLEND [H, V, L]



SILVERWOOD [H, V, L]



SHOWN IN STORM GREY

Made Better to Last Longer, & More Sustainable

Malarkey shingles are made with our patented **NEX® Polymer Modified [SBS Rubberized] Asphalt**, an innovative technology that infuses rubber and plastic polymers to strengthen the asphalt core of the shingle for superior impact resistance, granule adhesion, all-weather resilience, and aging longevity.

Malarkey shingles are also sustainable. Upcycled polymers from used tires and plastic bags improve durability and aging resistance, while helping reduce landfill waste. And smog-reducing granules help clean the air of emission pollutants, like planting trees on your roof.

Sustainability without sacrificing performance.



🌿 NEX® RUBBERIZED ASPHALT

Asphalt core of shingle is strengthened with SBS rubber polymers for superior all-weather resilience and aging resistance, then formed around a fiberglass mat, for **up to 35% greater tear strength than the industry standard (ASTM D3462), and up to Class 4 impact rating (highest rating possible)**. Insurance discounts may apply.

🌿 UPCYCLED RUBBER & PLASTIC

Polymers from recycled rubber and plastic improve shingle durability and aging resistance, while helping reduce landfill waste. **Each average-sized roof (30 squares) upcycles the equivalent of ~5 rubber tires and ~3,200 plastic grocery bags.**¹

🌿 RFID TAG [1 per 3-4 bundles]

Aides shingle identification, quality improvement, and lifecycle analysis.

🌿 EXTRA, RUBBERIZED RAIN SEAL

2X the rain seals of standard shingles, rubberized with SEBS rubber polymers to improve adhesion, resist dry-out, and provide extra leak protection.

It takes over 6,000 nails to secure a roof. Even one out of place can cause a leak.

🌿 THE ZONE® LARGER NAILING AREA

Up to 2X larger nailing area dramatically improves installation speed and accuracy, and helps ensure nails secure BOTH shingle layers – critical for preventing blow-offs.

🌿 LONGER & TAPERED BACKING SHIM

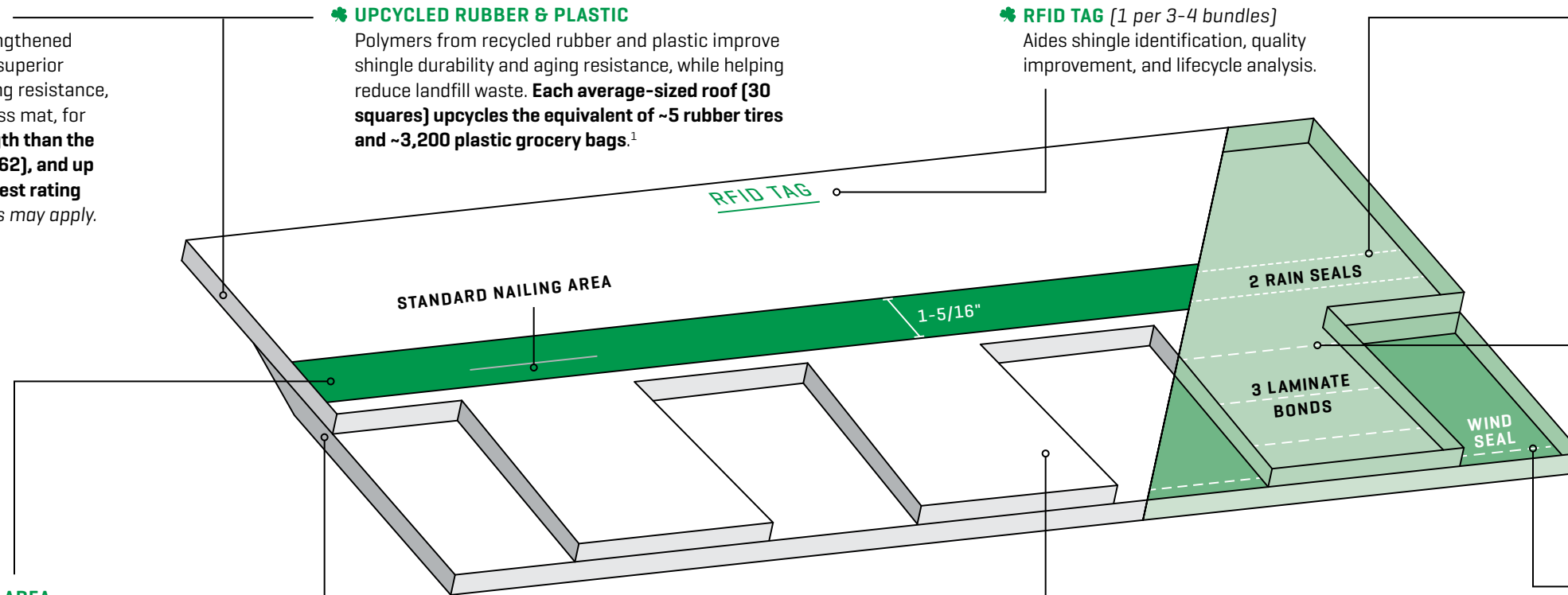
Longer, tapered shingle backing helps ensure nails penetrate BOTH shingle layers (critical for preventing blow-offs), promotes water flow, and helps prevent rain from blowing under the shingle and pooling (troughing), waiting to leak down a misplaced nail.

🌿 EXTRA, RUBBERIZED LAMINATE BOND

Up to 50% more laminate bonds than standard shingles, rubberized with SEBS rubber polymers to improve adhesion, resist dry-out, and provide extra protection against shingle delamination.

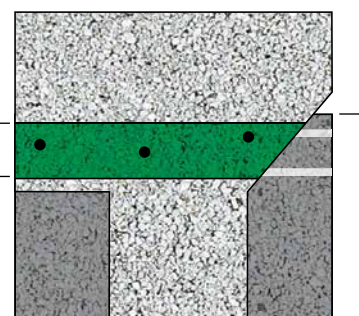
🌿 LARGE, RUBBERIZED WIND SEAL

Large wind seal, rubberized with SEBS rubber polymers to improve seal-down adhesion and resist dry-out, helps prevent wind from lifting the shingle up and off the roof. **Wind warranty up to 130 mph.**

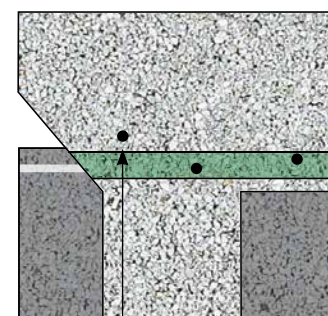


Top View:

Malarkey Shingle



Standard Shingle



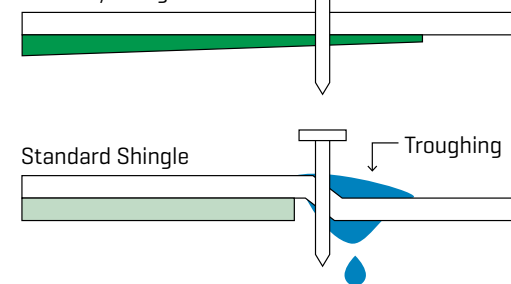
Wider

Longer

Nail misses back layer.

Side View:

Malarkey Shingle



Standard Shingle

Troughing

Nail misses back shingle layer causing leak.



🌿 CERAMIC-COATED GRANULES

Roofing Granules add color vibrancy and protect the shingle from hail impact and UV aging, while NEX® Rubberized Asphalt dramatically improves granule retention. **Up to 65% greater granule adhesion than the industry standard (ASTM D3462).**



🌿 SMOG-REDUCING GRANULES

Blend of photocatalytic 3M™ Smog-Reducing Granules harness sunlight to actively clean the air of emission pollutants. **Each average-sized roof (30 squares) has the smog-fighting potential of ~2 trees.**²



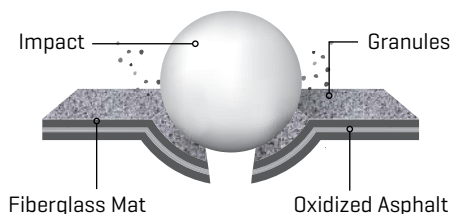
🌿 ALGAE-RESISTANT GRANULES

Blend of algae-resistant 3M™ Copper Granules help prevent black streaks caused by algae growth. **Up to a Limited Lifetime Algae Warranty.**

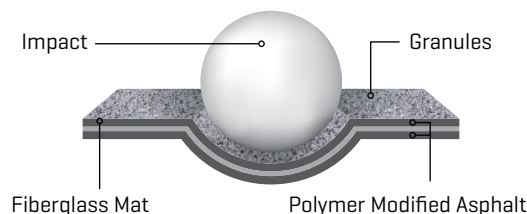
	VERY GOOD	BETTER	BEST
Architectural Shingle Lines Comparison Chart	Highlander® AR	Vista® AR	Legacy® Scotchgard™ Protector
Rubberized Asphalt Technology	NEX ⁺	NEX ⁺	NEX ⁺
Impact Rating [Class 4 Highest]	Class 3	Class 4	Class 4
Fire Rating [Class A Highest]	Class A	Class A	Class A
Tear Strength*	+10%	+25%	+35%
Thickness		+10%	+19%
Sustainability [assumes roof of 30 squares]			
~Upcycled Rubber Tires	4	5	6
~Upcycled Plastic Bags	2,900	3,200	4,000
~Trees 'Planted' ²	2	2	2
Cost	\$	\$\$	\$\$\$
Warranties*:			
Shingle Warranty	Limited Lifetime	Limited Lifetime	Limited Lifetime
Non-Prorated Period [years]	10	15	20
Algae Warranty [years]	10	15	Limited Lifetime**
Standard Wind Warranty [mph / kph / years]	110 / 177 / 15	110 / 177 / 15	110 / 177 / 15
Enhanced Wind Warranty [mph / kph / years]	130 / 209 / 15	130 / 209 / 15	130 / 209 / 15

*Versus standard shingles, as measured per ASTM D3462. **Included on shingles with Scotchgard™ Protector from 3M.

IMPACT RESISTANCE COMPARISON



Standard shingles are brittle, more likely to fracture and lose granules from hail impact.



Malarkey shingles are rubberized to better absorb and deflect hail impact.



¹ Assumes roof of 30 squares using Vista® shingles.

² Assumes roof of 30 squares. Source: Lawrence Berkeley National Laboratory and 3M.

TEST COMPLIANCE: All Shingles - ASTM D7158 Class H, ASTM D3462, ASTM D3161 Class F, ASTM D3018 Type I, ASTM E108 Class A Fire Rating, CSA A123.5, ICC Approval - ESR-3150, and ICC-ES AC438. FBC Approval #14809 [Legacy® and Vista® lines] and FBC Approval - FL36890 [Highlander® line]. UL 2218 Class 4 [Legacy® and Vista® lines] and UL 2218 Class 3 [Highlander® line].

DISCLAIMER: Photographs of shingles may not accurately represent their true color or the variations of color blends that will appear on the roof. **Before installation, five or six shingles should be laid out and reviewed for desired color.** Colors and specifications subject to change without notice. Shingle colors not available in all regions or product lines. Scotchgard and Scotchgard Protector, including the 3M logo, are all trademarks of 3M.

+ For complete warranty information, please reference Malarkey's **Shingle and Accessory Warranty** available at www.malarkeyroofing.com/warranties.

This version supersedes all previous versions. Rev. 03/24

www.malarkeyroofing.com



MEETS CSA A123.5 STANDARDS

